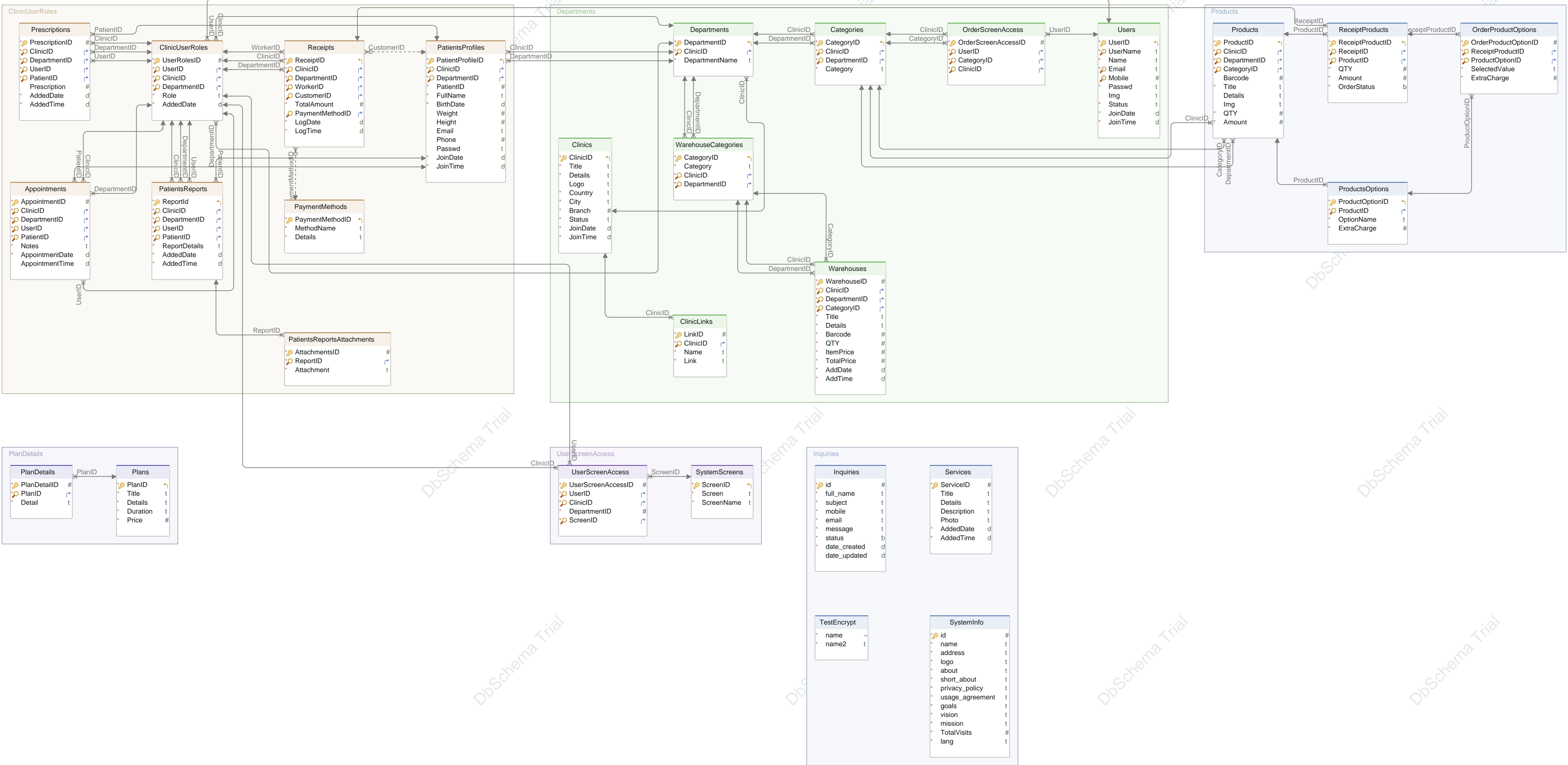


This is a layout. You can create multiple layouts with the same or different tables.
Edit tables by double-clicking the table headers.



Main Layout

Table Appointments

Idx	Name	Data Type
* Pk	AppointmentID	INT AUTO_INCREMENT
* Idx	ClinicID	INT
* Idx	DepartmentID	INT
* Idx	UserID	INT
* Idx	PatientID	INT
*	Notes	TEXT
*	AppointmentDate	DATE
	AppointmentTime	TIME

Indexes

Type	Name	On
Pk	pk_appointments	AppointmentID
	ClinicID	ClinicID
	DepartmentID	DepartmentID
	UserID	UserID
	PatientID	PatientID

Foreign Keys

Type	Name	On
	appointments_ibfk_1 (ClinicID) ref ClinicUserRoles (ClinicID)	
	appointments_ibfk_2 (DepartmentID) ref ClinicUserRoles (DepartmentID)	
	appointments_ibfk_3 (UserID) ref ClinicUserRoles (UserID)	
	appointments_ibfk_4 (PatientID) ref PatientsProfiles (PatientProfileID)	

Options

ENGINE=InnoDB DEFAULT CHARSET=utf8mb4 COLLATE=utf8mb4_general_ci

Table Categories

Idx	Name	Data Type
* Pk	CategoryID	INT AUTO_INCREMENT
* Idx	ClinicID	INT
* Idx	DepartmentID	INT
*	Category	VARCHAR(255)

Indexes

Type	Name	On
Pk	pk_categories	CategoryID
	categories_ibfk_1	ClinicID
	DepartmentID	DepartmentID

Foreign Keys

Type	Name	On
	categories_ibfk_1 (ClinicID) ref Departments (ClinicID)	
	categories_ibfk_2 (DepartmentID) ref Departments (DepartmentID)	

Options

ENGINE=InnoDB AUTO_INCREMENT=9 DEFAULT CHARSET=utf8mb4 COLLATE=utf8mb4_general_ci

Table ClinicLinks

Idx	Name	Data Type
* Pk	LinkID	INT AUTO_INCREMENT

Table ClinicLinks

* Idx	ClinicID	INT
*	Name	TEXT
*	Link	TEXT

Indexes

Type	Name	On
Pk	pk_cliniclinks	LinkID
	ClinicID	ClinicID

Foreign Keys

Type	Name	On
	Cliniclinks_ibfk_1 (ClinicID)	ref Clinics (ClinicID)

Options

ENGINE=InnoDB AUTO_INCREMENT=166 DEFAULT CHARSET=utf8mb4 COLLATE=utf8mb4_general_ci

Table ClinicUserRoles

Idx	Name	Data Type
* Pk	UserRolesID	INT AUTO_INCREMENT
* Idx	UserID	INT
* Idx	ClinicID	INT
* Idx	DepartmentID	INT
*	Role	ENUM(",",";","'","") DEFAULT "
*	AddedDate	DATE DEFAULT current_timestamp()

Indexes

Type	Name	On
Pk	pk_clinicuserroles	UserRolesID
	ClinicID	ClinicID
	UserID	UserID
	Clinicuserroles_ibfk_3	DepartmentID

Foreign Keys

Type	Name	On
	Clinicuserroles_ibfk_1 (ClinicID)	ref Departments (ClinicID)
	Clinicuserroles_ibfk_2 (UserID)	ref Users (UserID)
	Clinicuserroles_ibfk_3 (DepartmentID)	ref Departments (DepartmentID)

Options

ENGINE=InnoDB AUTO_INCREMENT=10 DEFAULT CHARSET=utf8mb4 COLLATE=utf8mb4_general_ci

Table Clinics

Idx	Name	Data Type
* Pk	ClinicID	INT AUTO_INCREMENT
*	Title	TEXT
*	Details	TEXT
	Logo	TEXT DEFAULT 'Clinic.svg'
*	Country	VARCHAR(255)
*	City	VARCHAR(255)
*	Branch	INT DEFAULT 1
*	Status	VARCHAR(255) DEFAULT 'Active'
*	JoinDate	DATE DEFAULT current_timestamp()
*	JoinTime	TIME DEFAULT current_timestamp()

Indexes

Table Clinics

Type	Name	On
Pk	pk_clinics	ClinicID

Options

ENGINE=InnoDB AUTO_INCREMENT=11 DEFAULT CHARSET=utf8mb4 COLLATE=utf8mb4_general_ci

Table Departments

Idx	Name	Data Type
* Pk	DepartmentID	INT AUTO_INCREMENT
* Idx	ClinicID	INT
*	DepartmentName	VARCHAR(255)

Indexes

Type	Name	On
Pk	pk_departments	DepartmentID
	ClinicID	ClinicID

Foreign Keys

Type	Name	On
	departments_ibfk_1 (ClinicID)	ref Clinics (ClinicID)

Options

ENGINE=InnoDB DEFAULT CHARSET=utf8mb4 COLLATE=utf8mb4_general_ci

Table Inquiries

Idx	Name	Data Type
* Pk	id	INT AUTO_INCREMENT
*	full_name	TEXT
*	subject	TEXT
*	mobile	TEXT
*	email	TEXT
*	message	TEXT
*	status	BOOLEAN DEFAULT false
*	date_created	DATETIME DEFAULT current_timestamp()
	date_updated	DATETIME ON UPDATE current_timestamp

Indexes

Type	Name	On
Pk	pk_inquiries	id

Options

ENGINE=InnoDB AUTO_INCREMENT=261 DEFAULT CHARSET=utf8mb4 COLLATE=utf8mb4_general_ci

Table OrderProductOptions

Idx	Name	Data Type
* Pk	OrderProductOptionID	INT
* Idx	ReceiptProductID	INT
* Idx	ProductOptionID	INT
*	SelectedValue	VARCHAR(255)
*	ExtraCharge	FLOAT DEFAULT 0

Indexes

Type	Name	On
Pk	pk_orderproductoptions	OrderProductOptionID
	ReceiptProductID	ReceiptProductID

Table OrderProductOptions

ProductOptionID	ProductOptionID	
Foreign Keys		
Type	Name	On
	orderproductoptions_ibfk_1 (ReceiptProductID)	ref ReceiptProducts (ReceiptProductID)
	orderproductoptions_ibfk_2 (ProductOptionID)	ref ProductsOptions (ProductOptionID)
Options		
ENGINE=InnoDB DEFAULT CHARSET=utf8mb4 COLLATE=utf8mb4_general_ci		

Table OrderScreenAccess

Idx	Name	Data Type
* Pk	OrderScreenAccessID	INT AUTO_INCREMENT
* Idx	UserID	INT
* Idx	CategoryID	INT
* Idx	ClinicID	INT
Indexes		
Type	Name	On
Pk	pk_orderscreenaccess	OrderScreenAccessID
	UserID	UserID
	CategoryID	CategoryID
	orderscreenaccess_ibfk_2	ClinicID
Foreign Keys		
Type	Name	On
	orderscreenaccess_ibfk_1 (UserID)	ref Users (UserID)
	orderscreenaccess_ibfk_2 (ClinicID)	ref Categories (ClinicID)
	orderscreenaccess_ibfk_3 (CategoryID)	ref Categories (CategoryID)
Options		
ENGINE=InnoDB AUTO_INCREMENT=28 DEFAULT CHARSET=utf8mb4 COLLATE=utf8mb4_general_ci		

Table PatientsProfiles

Idx	Name	Data Type
* Pk	PatientProfileID	INT AUTO_INCREMENT
* Idx	ClinicID	INT
* Idx	DepartmentID	INT
*	PatientID	INT
*	FullName	VARCHAR(255)
*	BirthDate	DATE
	Weight	DECIMAL(10,0)
	Height	DECIMAL(10,0)
	Email	VARCHAR(255)
	Phone	INT
	Passwd	TEXT
*	JoinDate	DATE DEFAULT current_timestamp()
*	JoinTime	TIME DEFAULT current_timestamp()
Indexes		
Type	Name	On
Pk	pk_patientsprofiles	PatientProfileID
	patientsprofiles_ibfk_1	ClinicID
	DepartmentID	DepartmentID

Table PatientsProfiles

Foreign Keys

Type	Name	On
	patientsprofiles_ibfk_1 (ClinicID)	ref Departments (ClinicID)
	patientsprofiles_ibfk_2 (DepartmentID)	ref Departments (DepartmentID)

Options

ENGINE=InnoDB DEFAULT CHARSET=utf8mb4 COLLATE=utf8mb4_general_ci

Table PatientsReports

Idx	Name	Data Type
* Pk	ReportId	INT AUTO_INCREMENT
* Idx	ClinicID	INT
* Idx	DepartmentID	INT
* Idx	UserID	INT
* Idx	PatientID	INT
*	ReportDetails	TEXT
*	AddedDate	DATE DEFAULT current_timestamp()
*	AddedTime	TIME DEFAULT current_timestamp()

Indexes

Type	Name	On
Pk	pk_patientsreports	ReportId
	ClinicID	ClinicID
	DepartmentID	DepartmentID
	UserID	UserID
	PatientID	PatientID

Foreign Keys

Type	Name	On
	patientsreports_ibfk_1 (ClinicID)	ref ClinicUserRoles (ClinicID)
	patientsreports_ibfk_2 (DepartmentID)	ref ClinicUserRoles (DepartmentID)
	patientsreports_ibfk_3 (UserID)	ref ClinicUserRoles (UserID)
	patientsreports_ibfk_4 (PatientID)	ref PatientsProfiles (PatientProfileID)

Options

ENGINE=InnoDB DEFAULT CHARSET=utf8mb4 COLLATE=utf8mb4_general_ci

Table PatientsReportsAttachments

Idx	Name	Data Type
* Pk	AttachmentsID	INT AUTO_INCREMENT
* Idx	ReportID	INT
*	Attachment	TEXT

Indexes

Type	Name	On
Pk	pk_patientsreportsattachments	AttachmentsID
	ReportID	ReportID

Foreign Keys

Type	Name	On
	patientsreportsattachments_ibfk_1 (ReportID)	ref PatientsReports (ReportId)

Options

ENGINE=InnoDB DEFAULT CHARSET=utf8mb4 COLLATE=utf8mb4_general_ci

Table PaymentMethods

Idx	Name	Data Type
* Pk	PaymentMethodID	INT AUTO_INCREMENT
*	MethodName	VARCHAR(255)
*	Details	TEXT

Indexes

Type	Name	On
Pk	pk_paymentmethods	PaymentMethodID

Options

ENGINE=InnoDB AUTO_INCREMENT=3 DEFAULT CHARSET=utf8mb4 COLLATE=utf8mb4_general_ci

Table PlanDetails

Idx	Name	Data Type
* Pk	PlanDetailID	INT AUTO_INCREMENT
* Idx	PlanID	INT
*	Detail	VARCHAR(255)

Indexes

Type	Name	On
Pk	pk_plandetails	PlanDetailID
	PlanID	PlanID

Foreign Keys

Type	Name	On
	plandetails_ibfk_1 (PlanID) ref Plans (PlanID)	

Options

ENGINE=InnoDB AUTO_INCREMENT=29 DEFAULT CHARSET=utf8mb4 COLLATE=utf8mb4_general_ci

Table Plans

Idx	Name	Data Type
* Pk	PlanID	INT AUTO_INCREMENT
*	Title	VARCHAR(255)
*	Details	TEXT
*	Duration	VARCHAR(255)
*	Price	INT

Indexes

Type	Name	On
Pk	pk_plans	PlanID

Options

ENGINE=InnoDB AUTO_INCREMENT=5 DEFAULT CHARSET=utf8mb4 COLLATE=utf8mb4_general_ci

Table Prescriptions

Idx	Name	Data Type
* Pk	PrescriptionID	INT
* Idx	ClinicID	INT
* Idx	DepartmentID	INT
* Idx	UserID	INT
* Idx	PatientID	INT
	Prescription	INT
*	AddedDate	DATE DEFAULT current_timestamp()
*	AddedTime	TIME DEFAULT current_timestamp()

Table Prescriptions

Indexes

Type	Name	On
Pk	pk_prescriptions	PrescriptionID
	PatientID	PatientID
	prescriptions_ibfk_1	ClinicID
	prescriptions_ibfk_2	DepartmentID
	prescriptions_ibfk_3	UserID

Foreign Keys

Type	Name	On
	prescriptions_ibfk_1 (ClinicID) ref ClinicUserRoles (ClinicID)	
	prescriptions_ibfk_2 (DepartmentID) ref ClinicUserRoles (DepartmentID)	
	prescriptions_ibfk_3 (UserID) ref ClinicUserRoles (UserID)	
	prescriptions_ibfk_4 (PatientID) ref PatientsProfiles (PatientProfileID)	

Options

ENGINE=InnoDB DEFAULT CHARSET=utf8mb4 COLLATE=utf8mb4_general_ci

Table Products

Idx	Name	Data Type
* Pk	ProductID	INT AUTO_INCREMENT
* Idx	ClinicID	INT
* Idx	DepartmentID	INT
* Idx	CategoryID	INT
	Barcode	INT
*	Title	VARCHAR(255)
	Details	TEXT
	Img	TEXT
*	QTY	INT
*	Amount	FLOAT

Indexes

Type	Name	On
Pk	pk_products	ProductID
	CategoryID	CategoryID
	products_ibfk_2	ClinicID
	DepartmentID	DepartmentID

Foreign Keys

Type	Name	On
	products_ibfk_1 (CategoryID) ref Categories (CategoryID)	
	products_ibfk_2 (ClinicID) ref Categories (ClinicID)	
	products_ibfk_3 (DepartmentID) ref Categories (DepartmentID)	

Options

ENGINE=InnoDB AUTO_INCREMENT=9 DEFAULT CHARSET=utf8mb4 COLLATE=utf8mb4_general_ci

Table ProductsOptions

Idx	Name	Data Type
* Pk	ProductOptionID	INT AUTO_INCREMENT
* Idx	ProductID	INT
*	OptionName	VARCHAR(255)
*	ExtraCharge	FLOAT DEFAULT 0

Table ProductsOptions

Indexes

Type	Name	On
Pk	pk_productsoptions	ProductOptionID
	ProductID	ProductID

Foreign Keys

Type	Name	On
	productsoptions_ibfk_1 (ProductID)	ref Products (ProductID)

Options

ENGINE=InnoDB AUTO_INCREMENT=22 DEFAULT CHARSET=utf8mb4 COLLATE=utf8mb4_general_ci

Table ReceiptProducts

Idx	Name	Data Type
* Pk	ReceiptProductID	INT AUTO_INCREMENT
* Idx	ReceiptID	INT
* Idx	ProductID	INT
*	QTY	INT
*	Amount	FLOAT
*	OrderStatus	BOOLEAN DEFAULT false

Indexes

Type	Name	On
Pk	pk_receiptproducts	ReceiptProductID
	ProductID	ProductID
	ReceiptID	ReceiptID

Foreign Keys

Type	Name	On
	receiptproducts_ibfk_1 (ProductID)	ref Products (ProductID)
	receiptproducts_ibfk_2 (ReceiptID)	ref Receipts (ReceiptID)

Options

ENGINE=InnoDB AUTO_INCREMENT=39 DEFAULT CHARSET=utf8mb4 COLLATE=utf8mb4_general_ci

Table Receipts

Idx	Name	Data Type
* Pk	ReceiptID	INT AUTO_INCREMENT
* Idx	ClinicID	INT
* Idx	DepartmentID	INT
* Idx	WorkerID	INT
Idx	CustomerID	INT
*	TotalAmount	FLOAT
Idx	PaymentMethodID	INT DEFAULT 1
*	LogDate	DATE DEFAULT current_timestamp()
*	LogTime	TIME DEFAULT current_timestamp()

Indexes

Type	Name	On
Pk	pk_receipts	ReceiptID
	CustomerID	CustomerID
	WorkerID	WorkerID
	PaymentMethodID	PaymentMethodID
	ClinicID	ClinicID

Table Receipts

receipts_ibfk_5 DepartmentID

Foreign Keys

Type	Name	On
	receipts_ibfk_1 (CustomerID) ref PatientsProfiles (PatientProfileID)	
	receipts_ibfk_2 (WorkerID) ref ClinicUserRoles (UserID)	
	receipts_ibfk_3 (PaymentMethodID) ref PaymentMethods (PaymentMethodID)	
	receipts_ibfk_4 (ClinicID) ref ClinicUserRoles (ClinicID)	
	receipts_ibfk_5 (DepartmentID) ref ClinicUserRoles (DepartmentID)	

Options

ENGINE=InnoDB AUTO_INCREMENT=25 DEFAULT CHARSET=utf8mb4 COLLATE=utf8mb4_general_ci

Table Services

Idx	Name	Data Type
* Pk	ServiceID	INT AUTO_INCREMENT
	Title	TEXT
	Details	TEXT
	Description	TEXT
	Photo	TEXT
*	AddedDate	DATE DEFAULT current_timestamp()
*	AddedTime	TIME DEFAULT current_timestamp()

Indexes

Type	Name	On
Pk	pk_services	ServiceID

Options

ENGINE=InnoDB AUTO_INCREMENT=34 DEFAULT CHARSET=utf8mb4 COLLATE=utf8mb4_general_ci

Table SystemInfo

Idx	Name	Data Type
* Pk	id	INT AUTO_INCREMENT
*	name	TEXT
*	address	TEXT
*	logo	TEXT
*	about	TEXT
*	short_about	TEXT
*	privacy_policy	TEXT
*	usage_agreement	TEXT
*	goals	TEXT
*	vision	TEXT
*	mission	TEXT
*	TotalVisits	INT
*	lang	TEXT

Indexes

Type	Name	On
Pk	pk_systeminfo	id

Options

ENGINE=InnoDB AUTO_INCREMENT=3 DEFAULT CHARSET=utf8mb4 COLLATE=utf8mb4_general_ci

Table SystemScreens

Idx	Name	Data Type
* Pk	ScreenID	INT AUTO_INCREMENT
*	Screen	VARCHAR(255)
*	ScreenName	VARCHAR(255)

Indexes

Type	Name	On
Pk	pk_systemscreens	ScreenID

Options

ENGINE=InnoDB AUTO_INCREMENT=17 DEFAULT CHARSET=utf8mb4 COLLATE=utf8mb4_general_ci

Table TestEncrypt

Idx	Name	Data Type
*	name	VARBINARY(255)
*	name2	VARCHAR(255)

Options

ENGINE=InnoDB DEFAULT CHARSET=utf8mb4 COLLATE=utf8mb4_general_ci

Table UserScreenAccess

Idx	Name	Data Type
* Pk	UserScreenAccessID	INT AUTO_INCREMENT
* Idx	UserID	INT
* Idx	ClinicID	INT
*	DepartmentID	INT
* Idx	ScreenID	INT

Indexes

Type	Name	On
Pk	pk_userscreenaccess	UserScreenAccessID
	ClinicID	ClinicID
	UserID	UserID
	ScreenID	ScreenID

Foreign Keys

Type	Name	On
	userscreenaccess_ibfk_1 (ClinicID)	ref ClinicUserRoles (ClinicID)
	userscreenaccess_ibfk_2 (UserID)	ref ClinicUserRoles (UserID)
	userscreenaccess_ibfk_3 (ScreenID)	ref SystemScreens (ScreenID)

Options

ENGINE=InnoDB AUTO_INCREMENT=22 DEFAULT CHARSET=utf8mb4 COLLATE=utf8mb4_general_ci

Table Users

Idx	Name	Data Type
* Pk	UserID	INT AUTO_INCREMENT
* Unq	UserName	VARCHAR(255)
*	Name	VARCHAR(255)
* Unq	Email	VARCHAR(255)
Unq	Mobile	INT
*	Passwd	TEXT
	Img	TEXT DEFAULT 'User.svg'
*	Status	VARCHAR(255) DEFAULT 'Active'

Table Users

*	JoinDate	DATE DEFAULT current_timestamp()
*	JoinTime	TIME DEFAULT current_timestamp()

Indexes

Type	Name	On
Pk	pk_users	UserID
Unq	UserName	UserName
Unq	Email	Email, Mobile

Options

ENGINE=InnoDB AUTO_INCREMENT=24 DEFAULT CHARSET=utf8mb4 COLLATE=utf8mb4_general_ci

Table WarehouseCategories

Idx	Name	Data Type
* Pk	CategoryID	INT AUTO_INCREMENT
*	Category	VARCHAR(255)
* Idx	ClinicID	INT
* Idx	DepartmentID	INT

Indexes

Type	Name	On
Pk	pk_warehousecategories	CategoryID
	ClinicID	ClinicID
	DepartmentID	DepartmentID

Foreign Keys

Type	Name	On
	warehousecategories_ibfk_1 (ClinicID)	ref Departments (ClinicID)
	warehousecategories_ibfk_2 (DepartmentID)	ref Departments (DepartmentID)

Options

ENGINE=InnoDB AUTO_INCREMENT=5 DEFAULT CHARSET=utf8mb4 COLLATE=utf8mb4_general_ci

Table Warehouses

Idx	Name	Data Type
* Pk	WarehouseID	INT AUTO_INCREMENT
* Idx	ClinicID	INT
* Idx	DepartmentID	INT
* Idx	CategoryID	INT
*	Title	VARCHAR(255)
*	Details	TEXT
*	Barcode	INT
*	QTY	INT
*	ItemPrice	FLOAT
*	TotalPrice	FLOAT
*	AddDate	DATE DEFAULT current_timestamp()
*	AddTime	TIME DEFAULT current_timestamp()

Indexes

Type	Name	On
Pk	pk_warehouses	WarehouseID
	ClinicID	ClinicID
	CategoryID	CategoryID
	DepartmentID	DepartmentID

Table Warehouses

Foreign Keys

Type	Name	On
	warehouses_ibfk_1 (ClinicID)	ref WarehouseCategories (ClinicID)
	warehouses_ibfk_2 (CategoryID)	ref WarehouseCategories (CategoryID)
	warehouses_ibfk_3 (DepartmentID)	ref WarehouseCategories (DepartmentID)

Options

ENGINE=InnoDB AUTO_INCREMENT=4 DEFAULT CHARSET=utf8mb4 COLLATE=utf8mb4_general_ci